

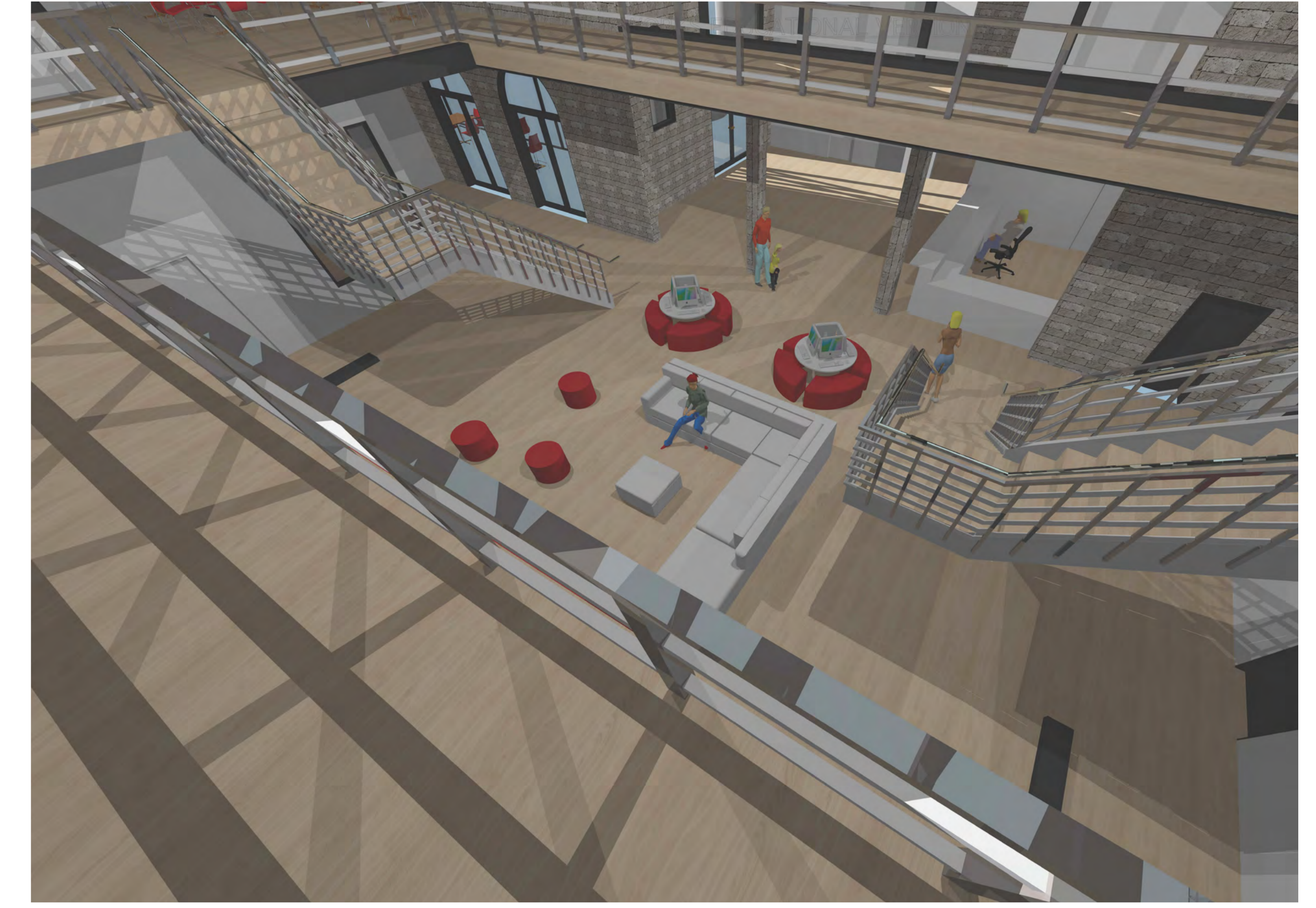
PUMPEHUSET HOSTEL

The site was built in 1857 as an industrial waterworks plant. It was designed in the Romanesque style by N.S. Nebelong. Since the waterworks complex was rebuilt in 1951, this building has been out of use. The machine house has been used as a music venue, featuring events and concerts and drawing in a young alternative crowd.

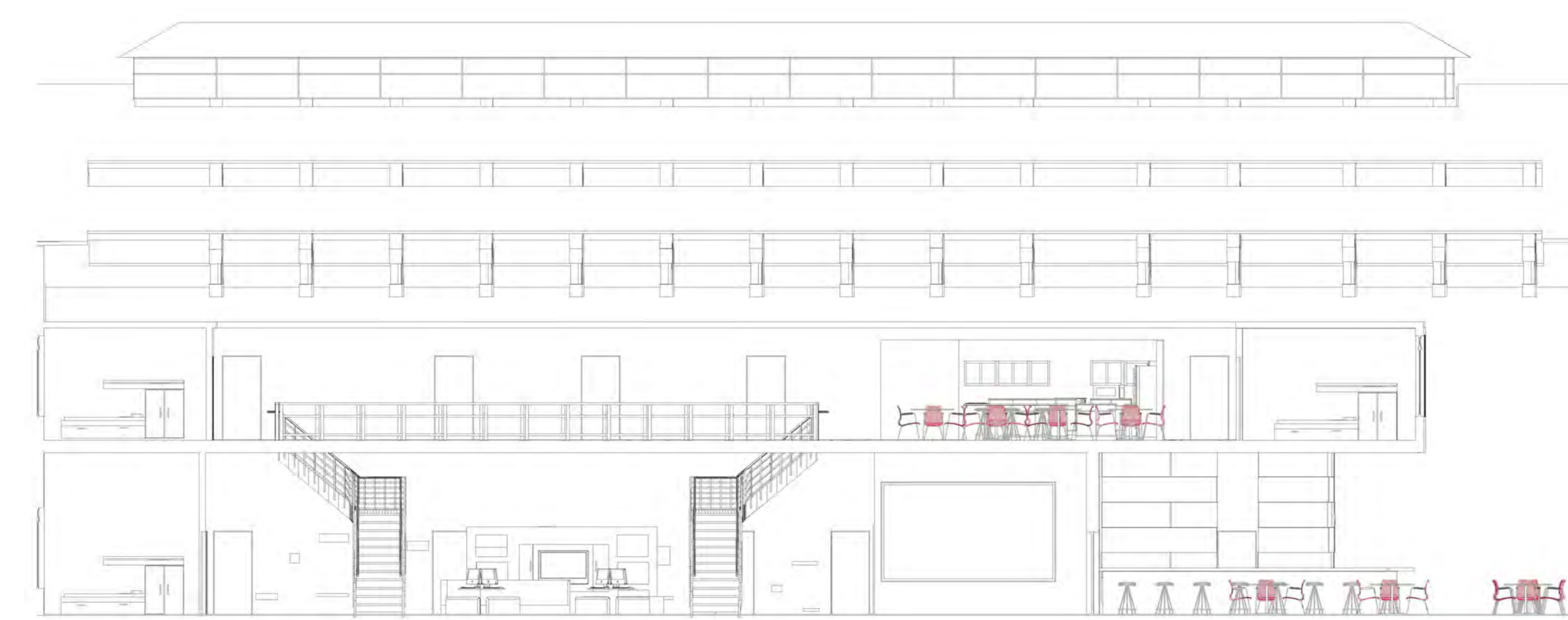
For the future youth hostel I will create an inviting and functional environment for travellers. I will create spaces that will accommodate the needs of a variety of travellers by providing private spaces and central public spaces. I will create a comfortable circulation that will promote interaction between the guests. I will create a modern industrial design that reflects that previous use of the building as a waterworks industrial plant. I will contrast between old and new Scandinavian architecture by utilizing characteristics of the existing structure while also taking a modern style approach in what is added on. To add more natural light into the space I will add windows to the facade and skylights.



PROPOSED FIRST FLOOR PLAN
SCALE: 1:100



PROPOSED SECOND FLOOR PLAN
SCALE: 1:100



PROPOSED LONG SECTION
SCALE: 1:100

